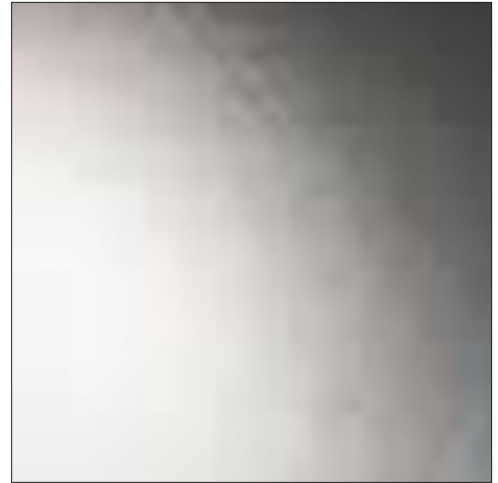


PRODUCT**Artique****GLASS TYPE**

Decorative

DESCRIPTION

This glass is an unusual twist on antique glass made by Spectrum Glass. It is ideal for cabinets.

**TREATMENT****PACKING**

Light Case; Approximately 58 pieces per case

LEAD TIME

Stock Item, available for immediate delivery

AVAILABLE THICKNESS	1/8" (3.2mm)	5/32"	3/16"	1/4"	3/8"	1/2"	3/4"
STANDARD STOCK SIZE	26" x 72"	XX	XX	XX	XX	XX	XX
LITES PER CASE	58	XX	XX	XX	XX	XX	XX
STANDARD STOCK SIZE	XX	XX	XX	XX	XX	XX	XX
LITES PER CASE	XX	XX	XX	XX	XX	XX	XX

* Contact us for special orders and/or thicknesses