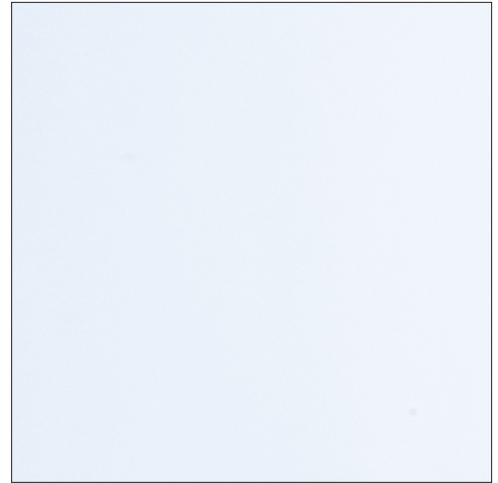


PRODUCT**Low-Iron, Mirror Satin-Etched****GLASS TYPE**

Decorative

**DESCRIPTION**

Satin Etched takes on the look of stainless steel once it is silvered. When you bevel or groove the etched surface, the reflective mirror is restored. The extra-smooth finish is consistent throughout the entire sheet and can be utilized anywhere a normal mirror would be used. It is perfect for use in wall cladding and signage. It is available on low-iron substrate.

TREATMENT**PACKING****Heavy Case; Approximately 22 pieces per case****LEAD TIME****Stock Item, available for immediate delivery**

AVAILABLE THICKNESS	1/8" (3.2mm)	5/32"	3/16"	1/4"	3/8"	1/2"	3/4"
STANDARD STOCK SIZE	XX	XX	XX	88" 1/2 x 126"	XX	XX	XX
LITES PER CASE	XX	XX	XX	22	XX	XX	XX
STANDARD STOCK SIZE	XX	XX	XX	XX	XX	XX	XX
LITES PER CASE	XX	XX	XX	XX	XX	XX	XX

* Contact us for special orders and/or thicknesses